



CHHATRAPATI SHAHUJI MAHARAJ UNIVERSITY
(Formerly Kanpur University, Kanpur)
Kanpur UP – 208024

A

**Student Satisfaction Survey (SSS) on
overall institutional performance
2021 – 22**

**Under Caption 2.7.1
In**

**Criteria – II
Teaching, Learning & Evaluation**

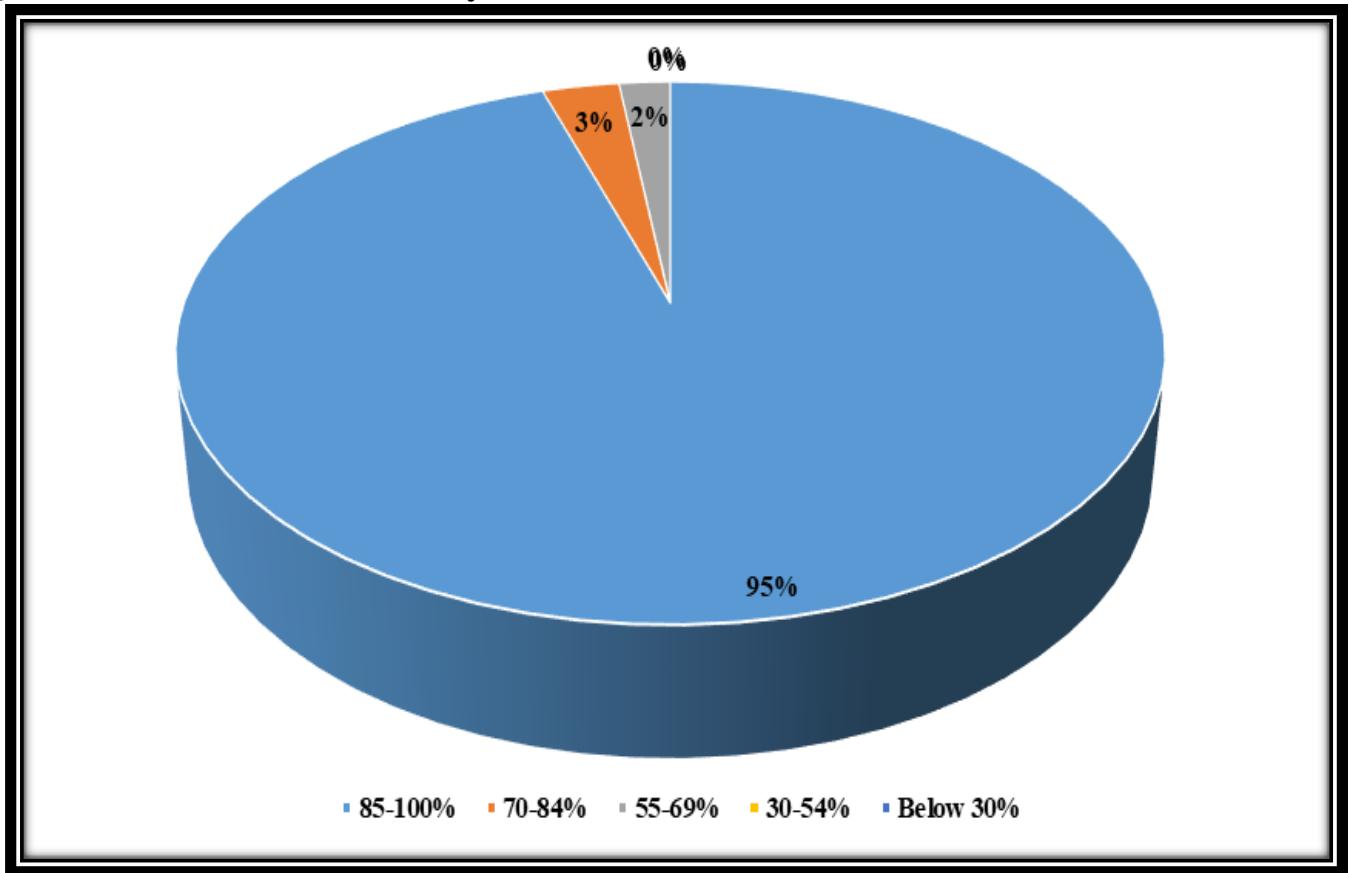


**for
The Fulfilment
of
Annual Quality Assurance Report (AQAR)
2021 – 22**

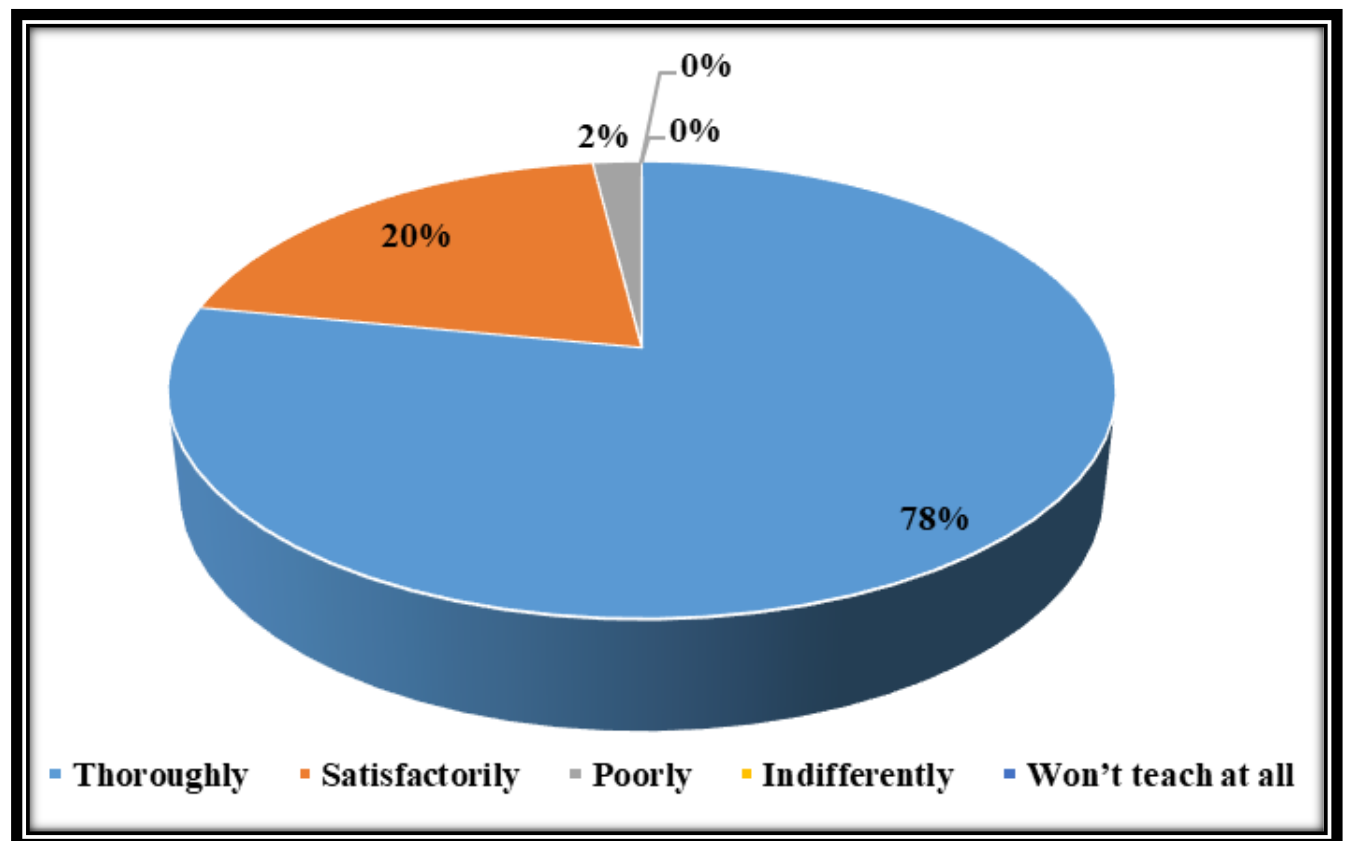
**National Assessment and Accreditation Council
(NAAC)**

Questions/Item-wise Analysis Report

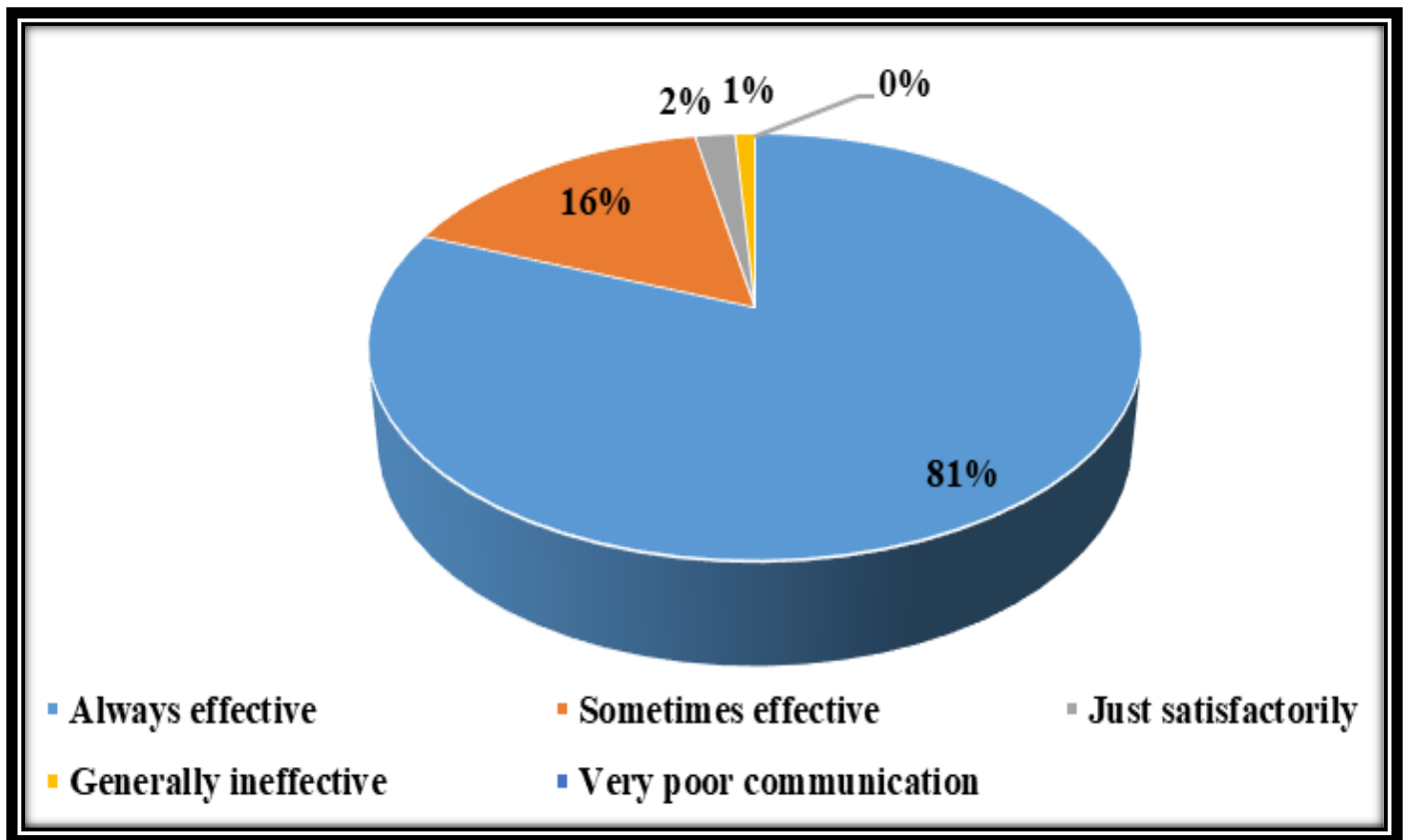
Que-1 **How much of the syllabus was covered in the class?**



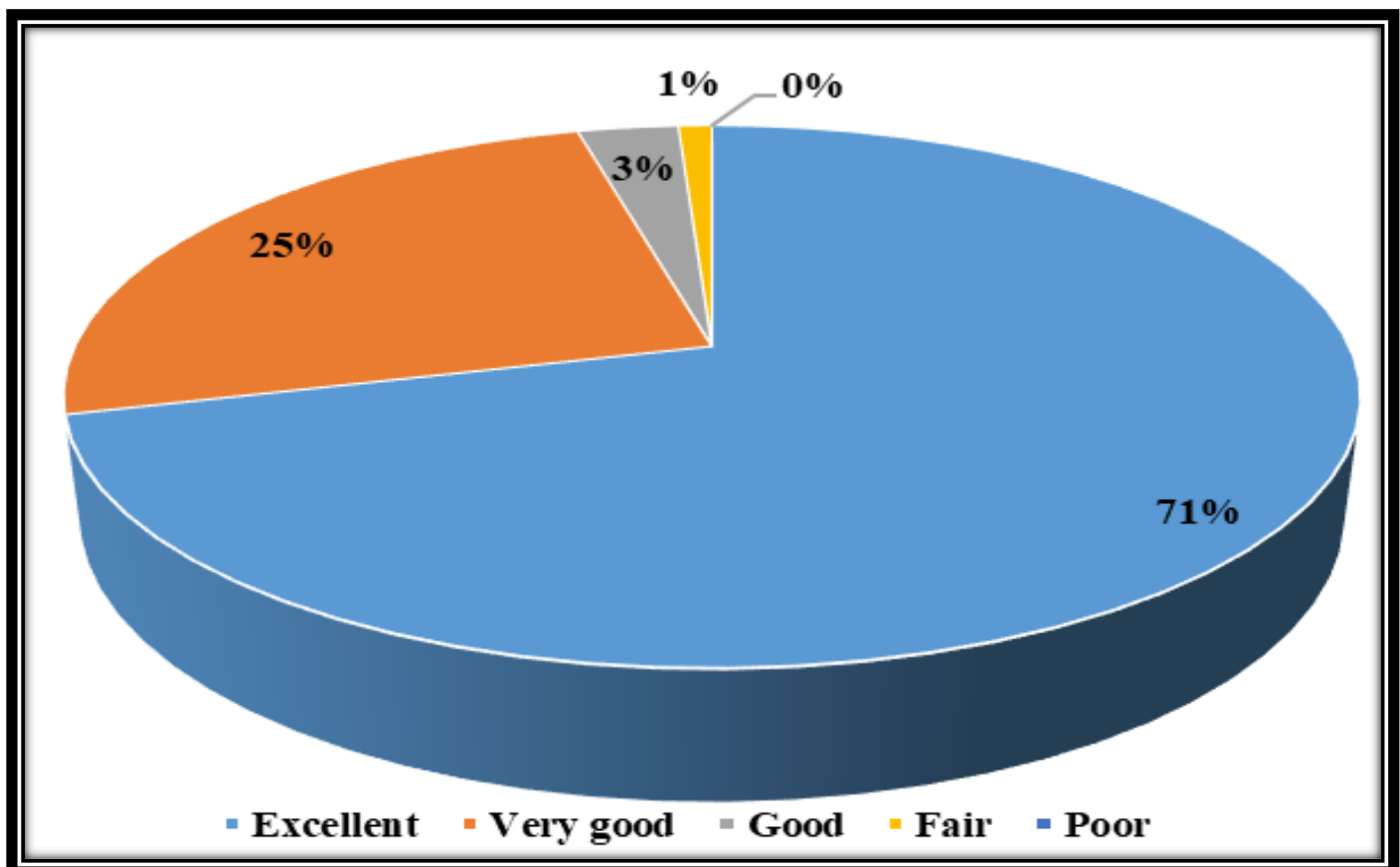
Que-2 **How well did the teachers prepare for the classes?**



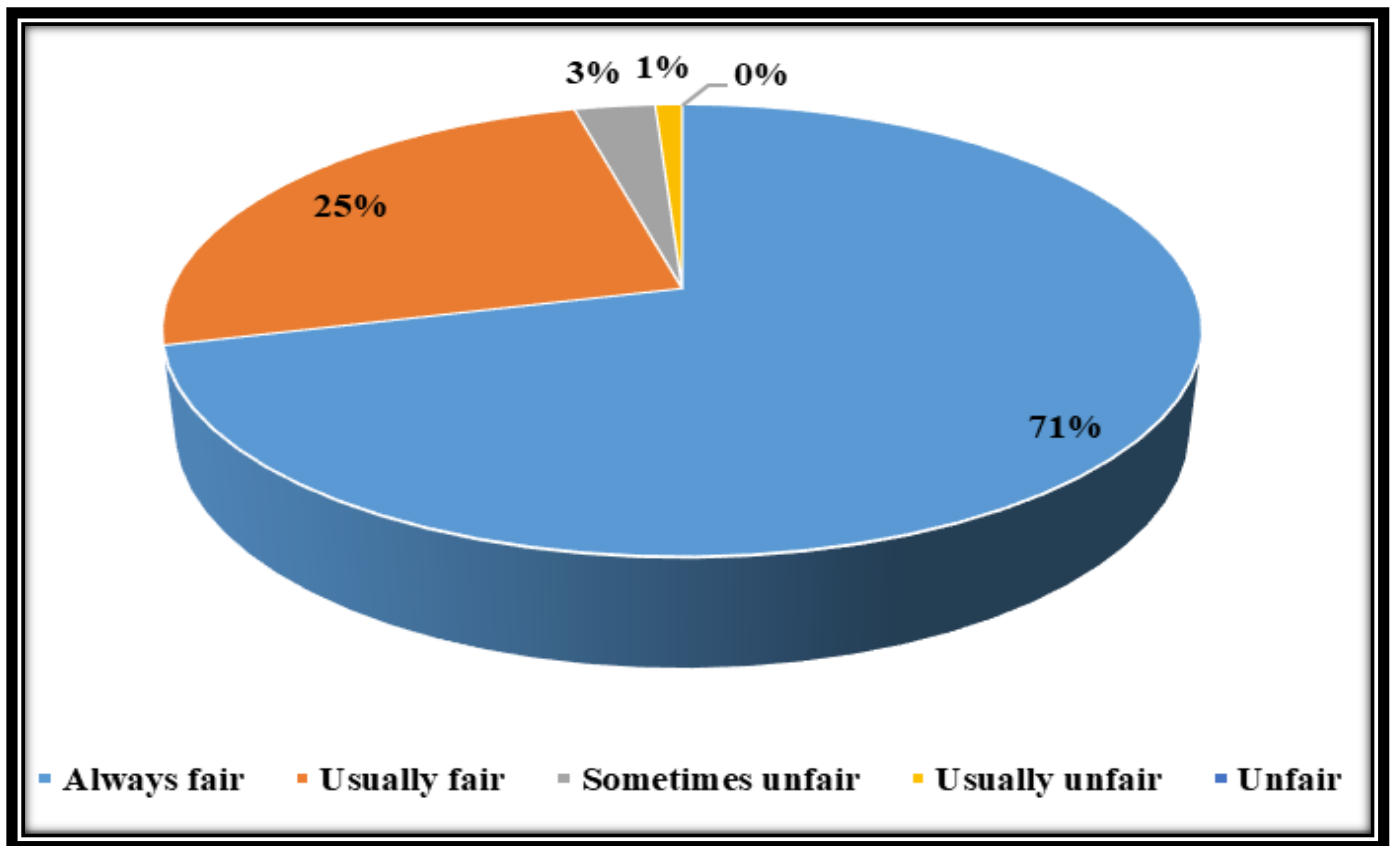
Que-3 **How well were the teachers able to communicate?**



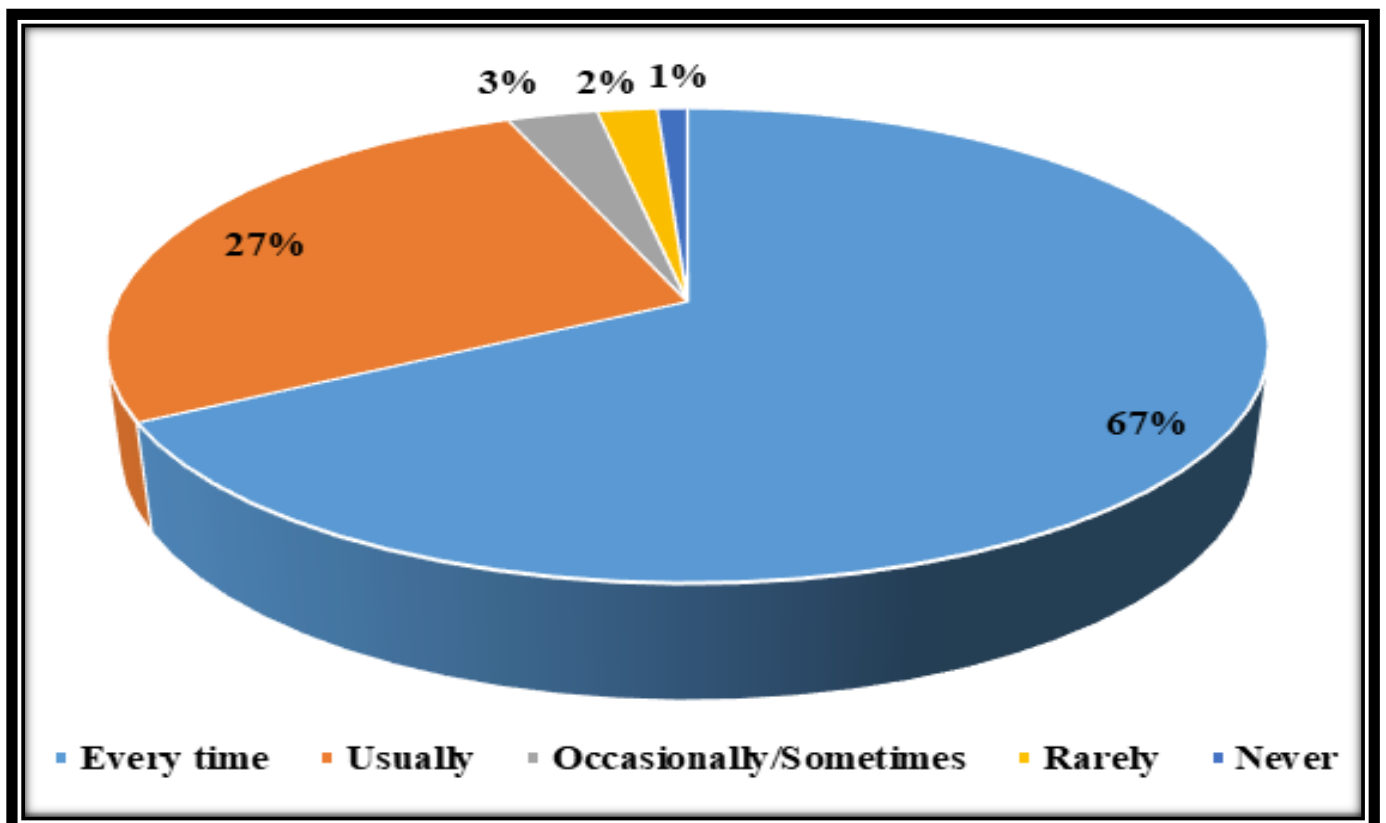
Que-4 **The teacher's approach to teaching can best be described as?**



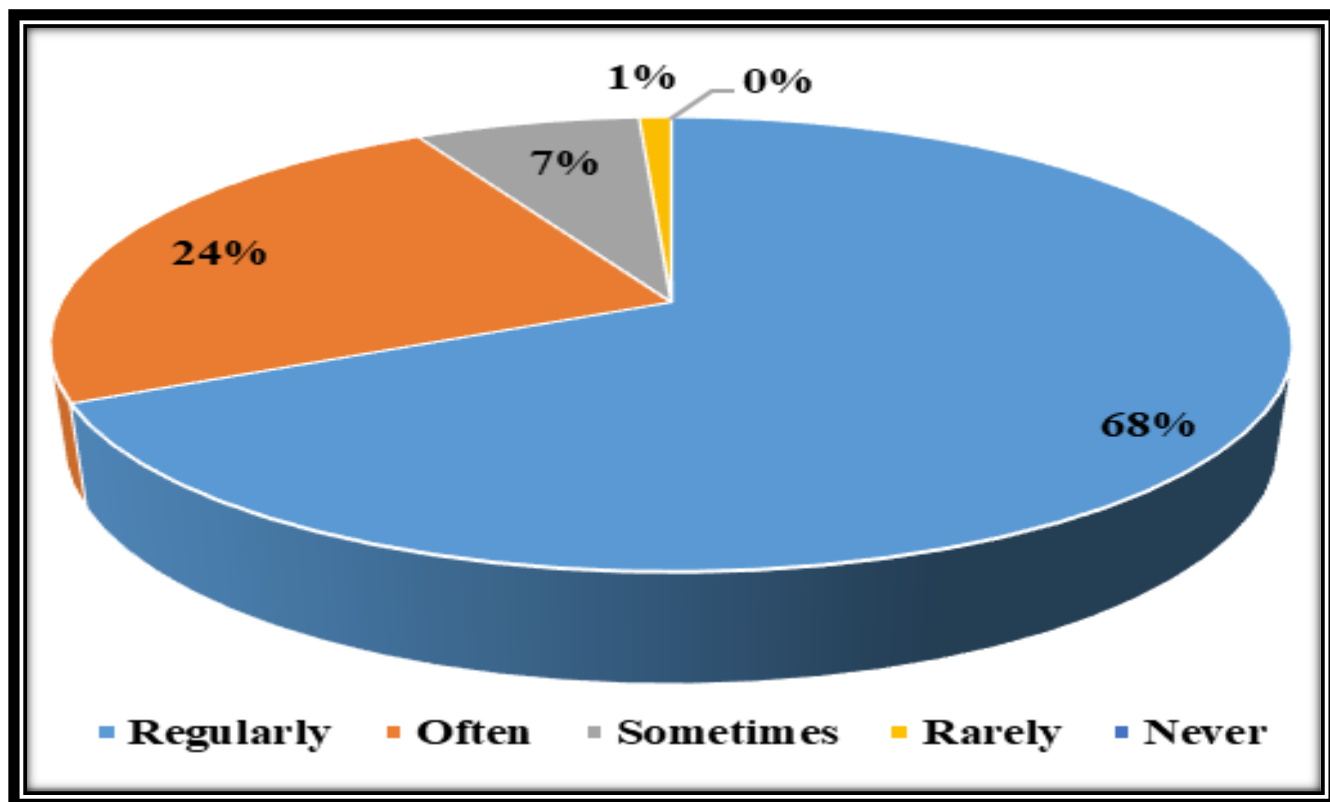
Que-5 Fairness of the evaluation process by the teachers?



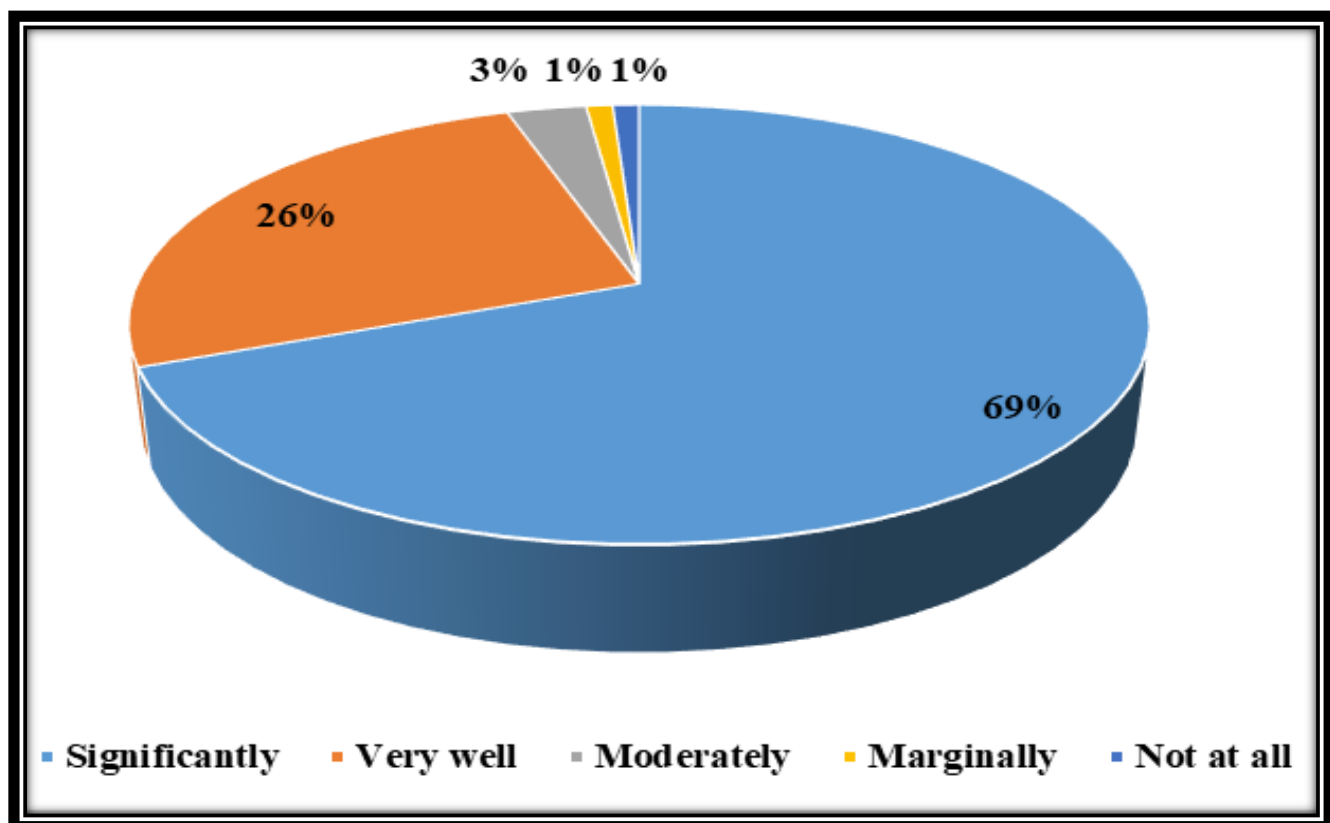
Que-6 Was your performance in assignments discussed with you?



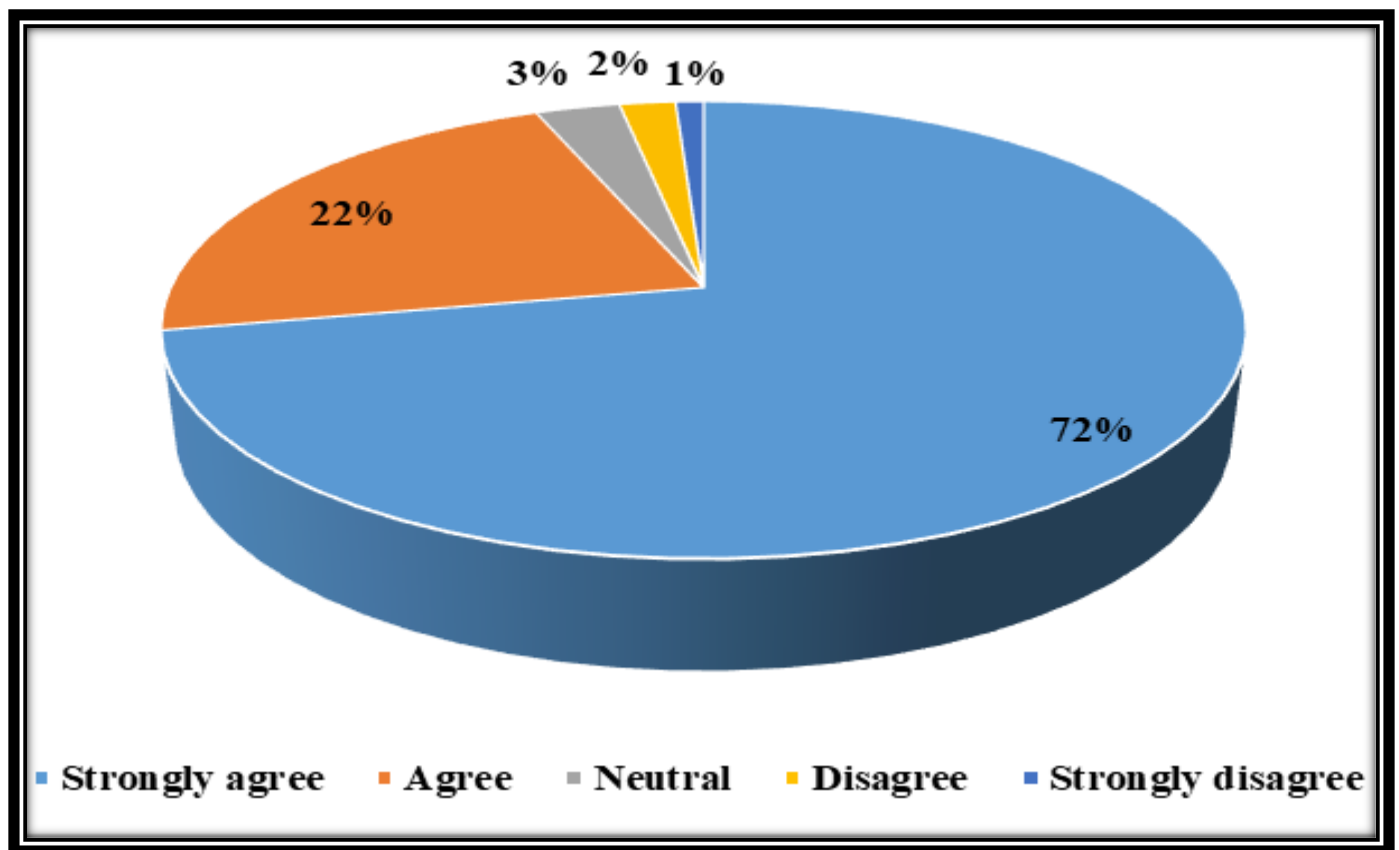
Que- 7 The institute takes active interest in promoting internship, student exchange, field visit opportunities for students.



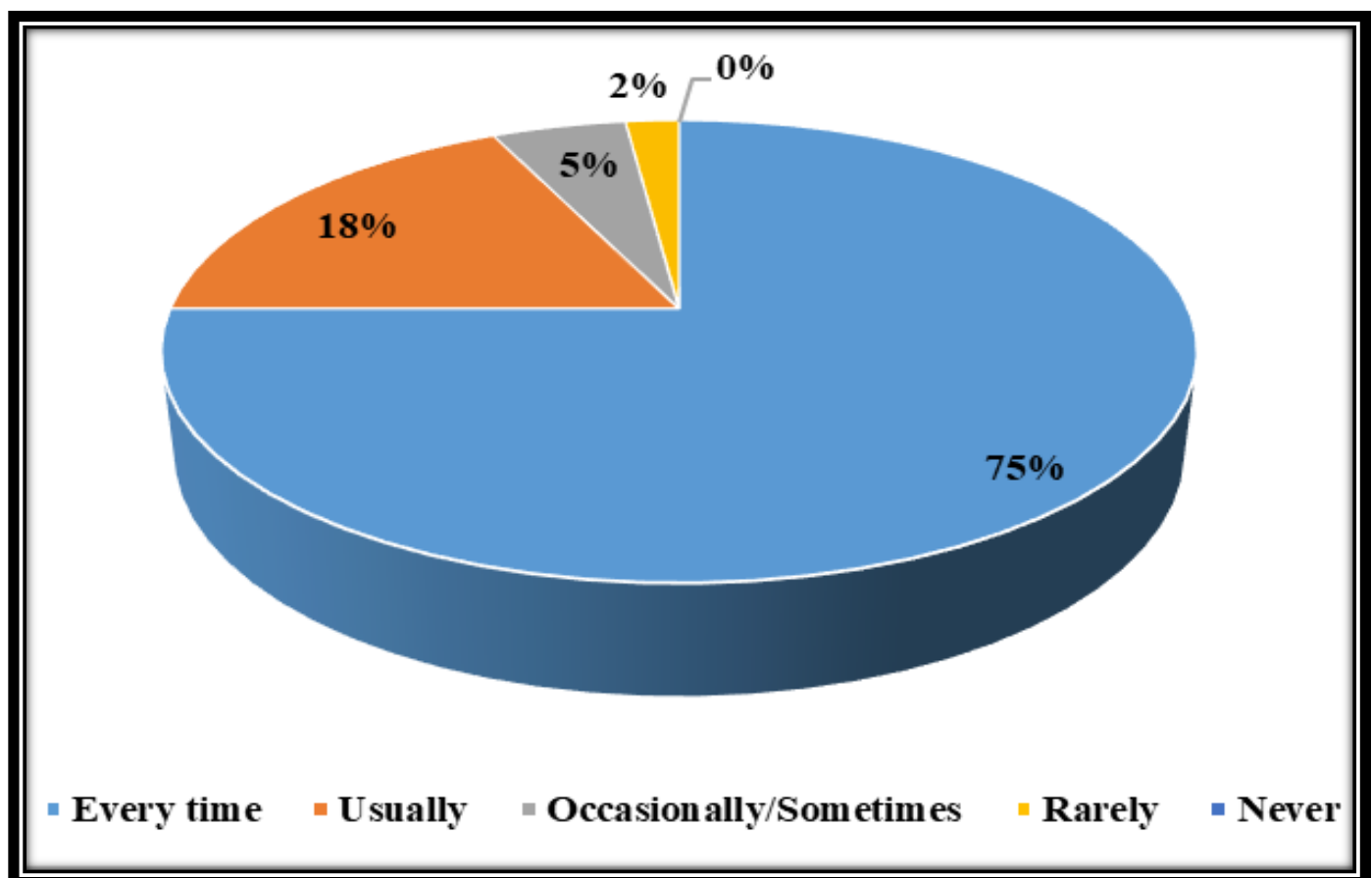
Que-8 The teaching and mentoring process in your institution facilitates you in cognitive, social and emotional growth?



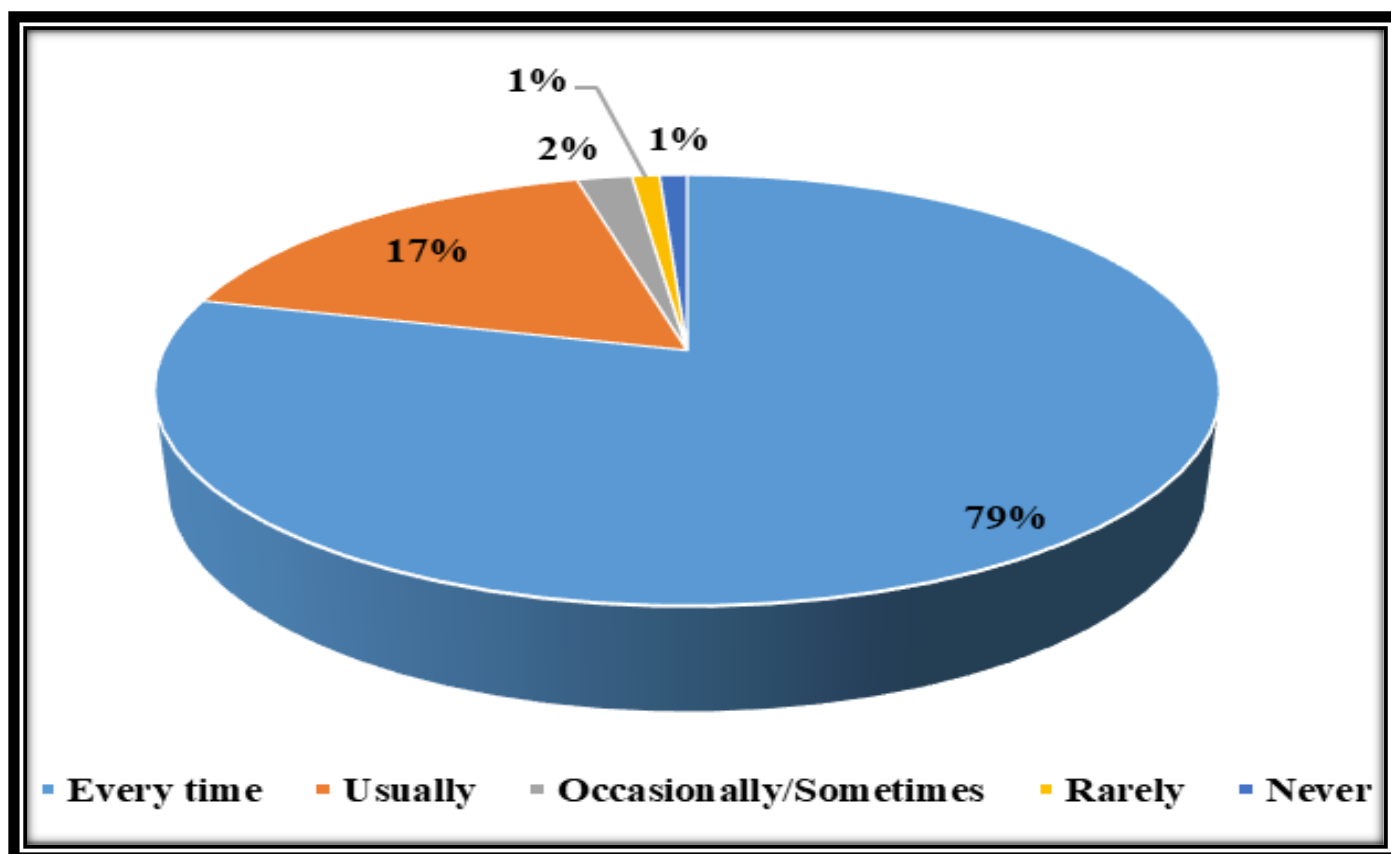
Que-9 The institution provides multiple opportunities to learn and grow?



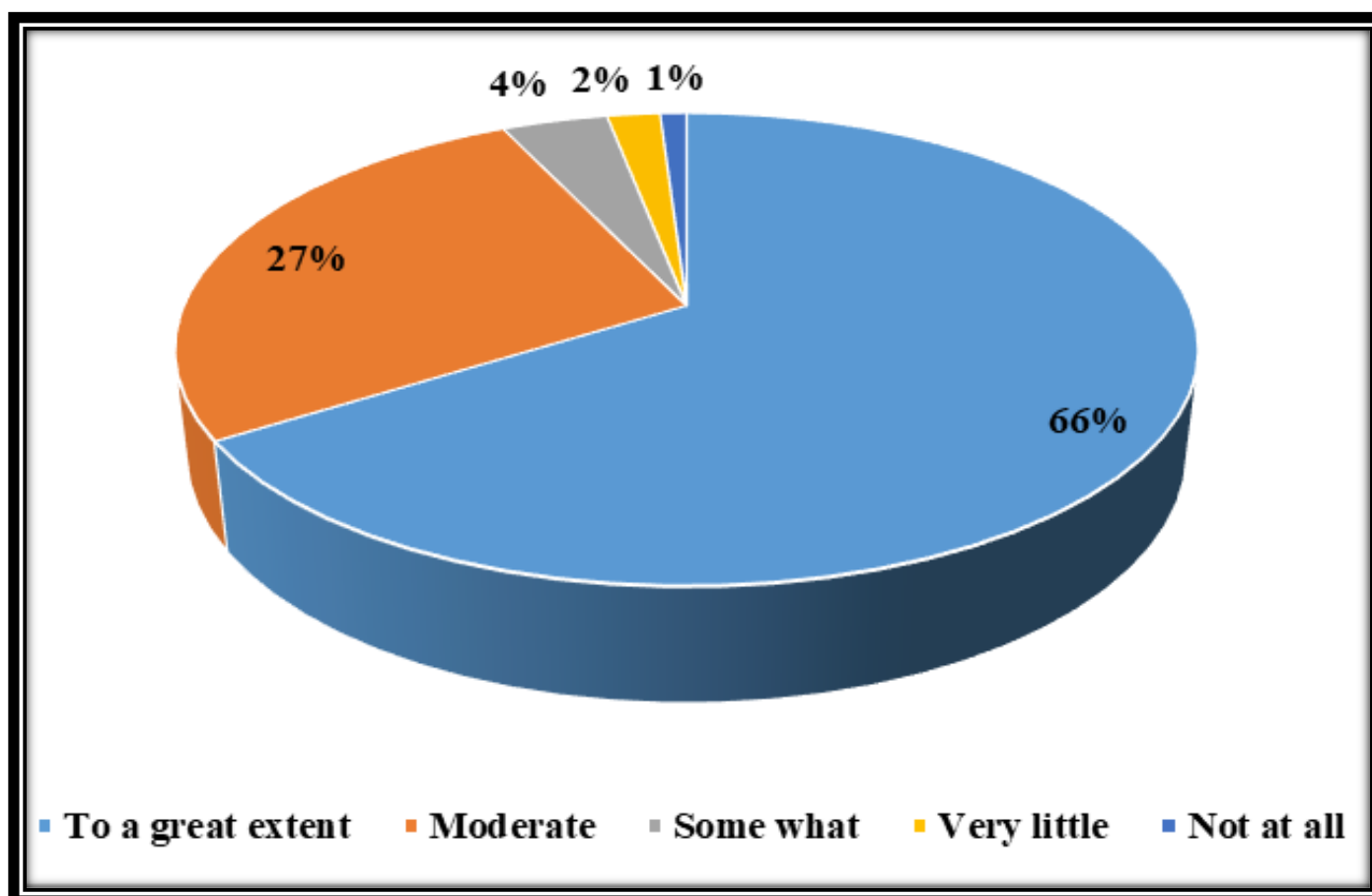
Que-10 Teachers inform you about your expected competencies, course outcomes and programme outcomes.



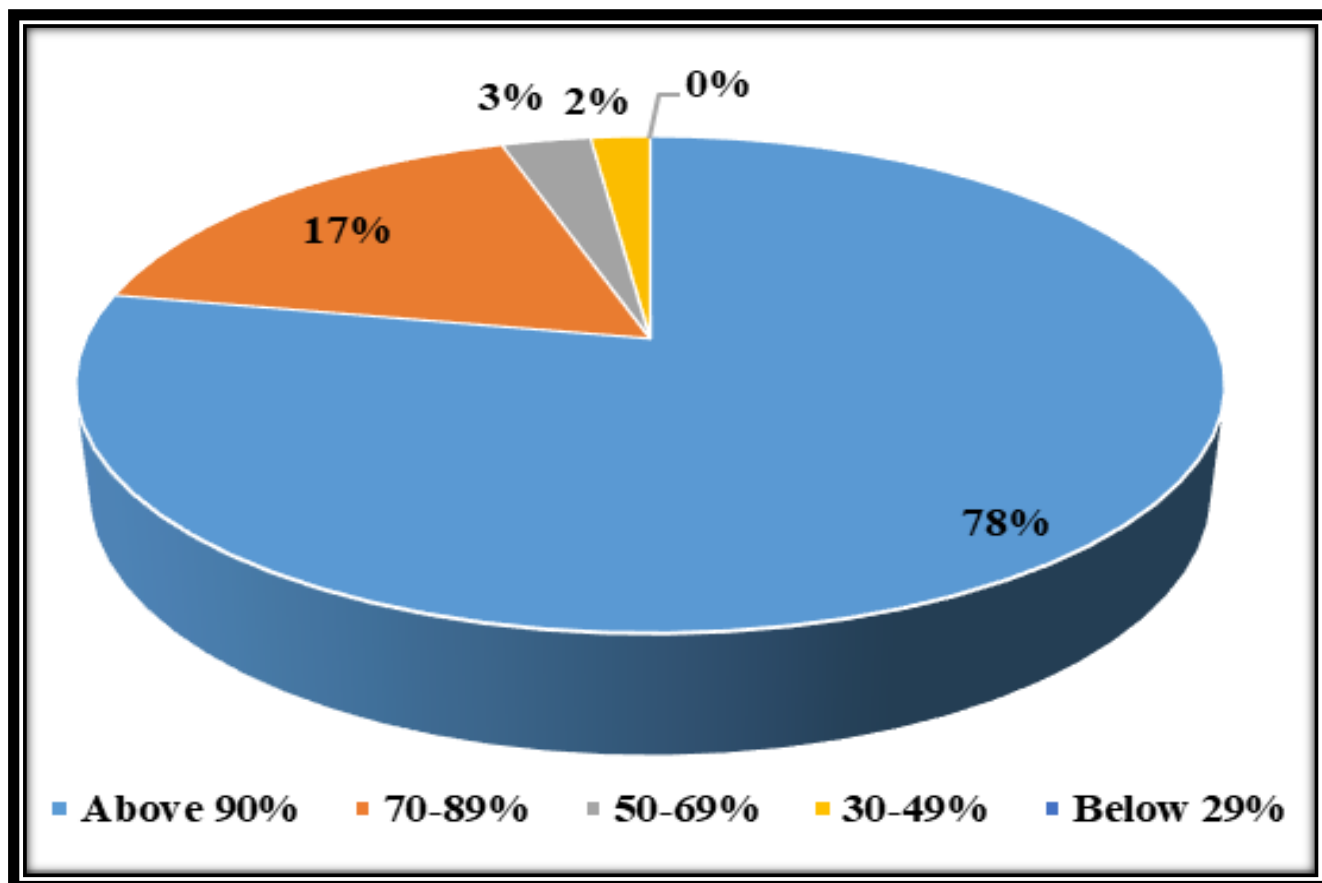
Que-11 **The teachers illustrate the concepts through examples and applications.**



Que-12 **Teachers encourage you to give suggestions to improve teaching learning process.**



Que-13 What percentage of teachers use ICT tools such as LCD projector, Multimedia, etc. while teaching?



Que-14 The overall quality of teaching-learning process in tour institute is very good?

